

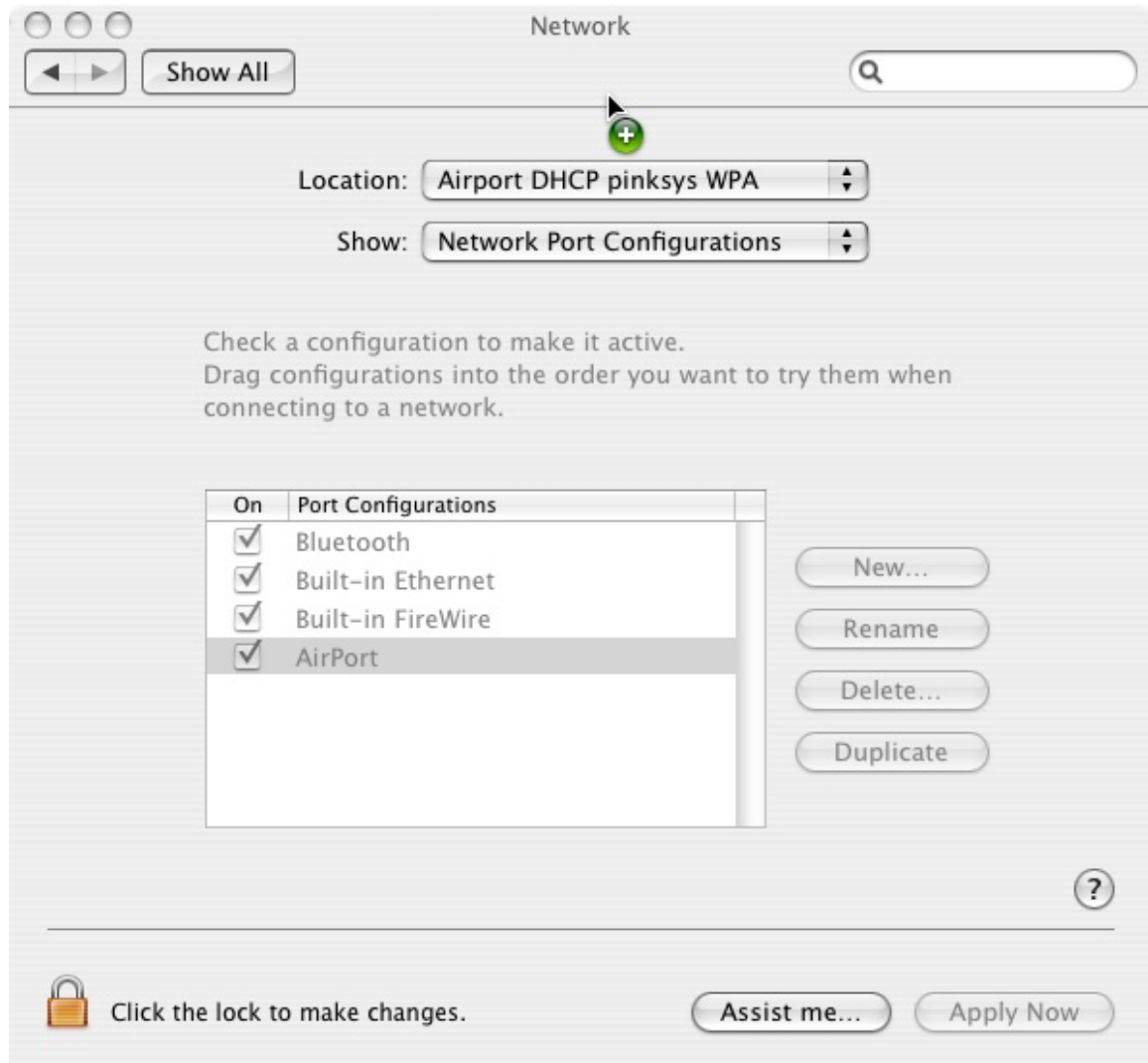
# Apple OSX 10.4 (Tiger) Airport Setup

Screenshots from Apple OSX 10.4 (Tiger) Airport setup. (Last updated 2007-07-28).

## Network Port Configurations

Go Apple logo / System Preferences / Network.

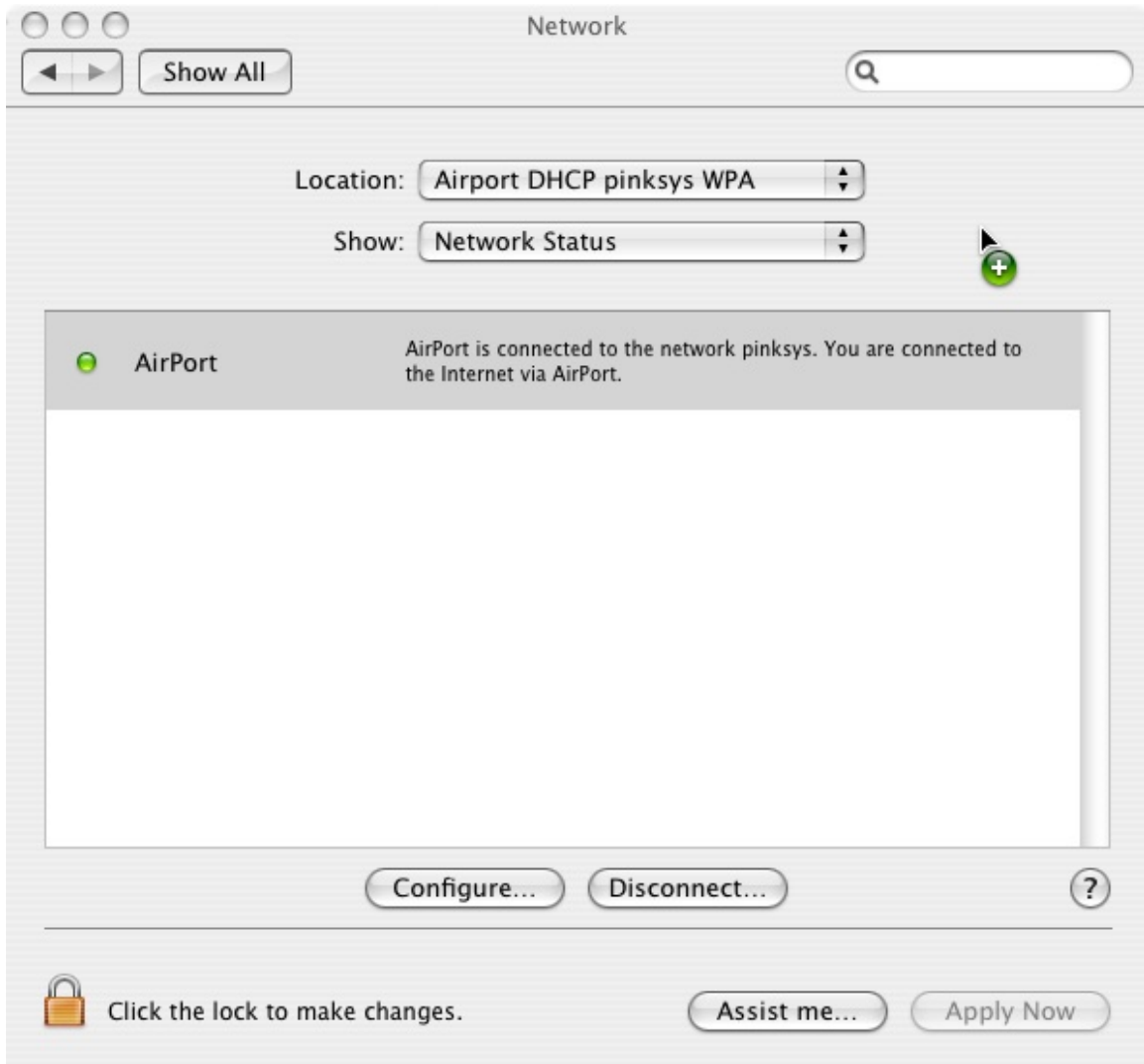
Then select Show Network Port Configurations:



[Airport 4 Network Port Configurations.jpg]

## Network Status

Select Show NetWork Status:

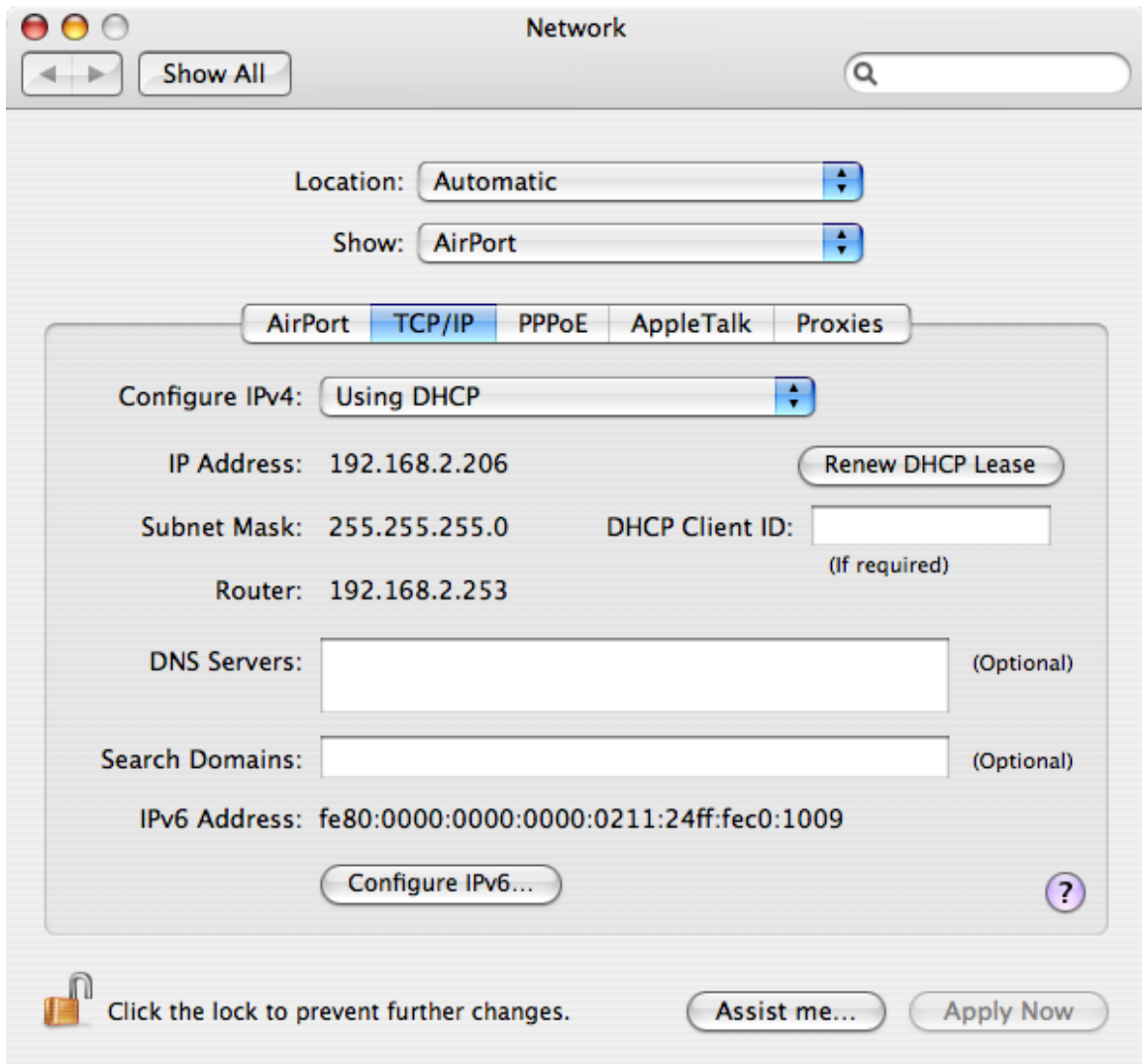


[Airport 5 Network Status.jpg]

## Airport TCP/IP setup

Go Apple logo / System Preferences / Network.

Then select Location, Show AirPort and the TCP/IP tab:

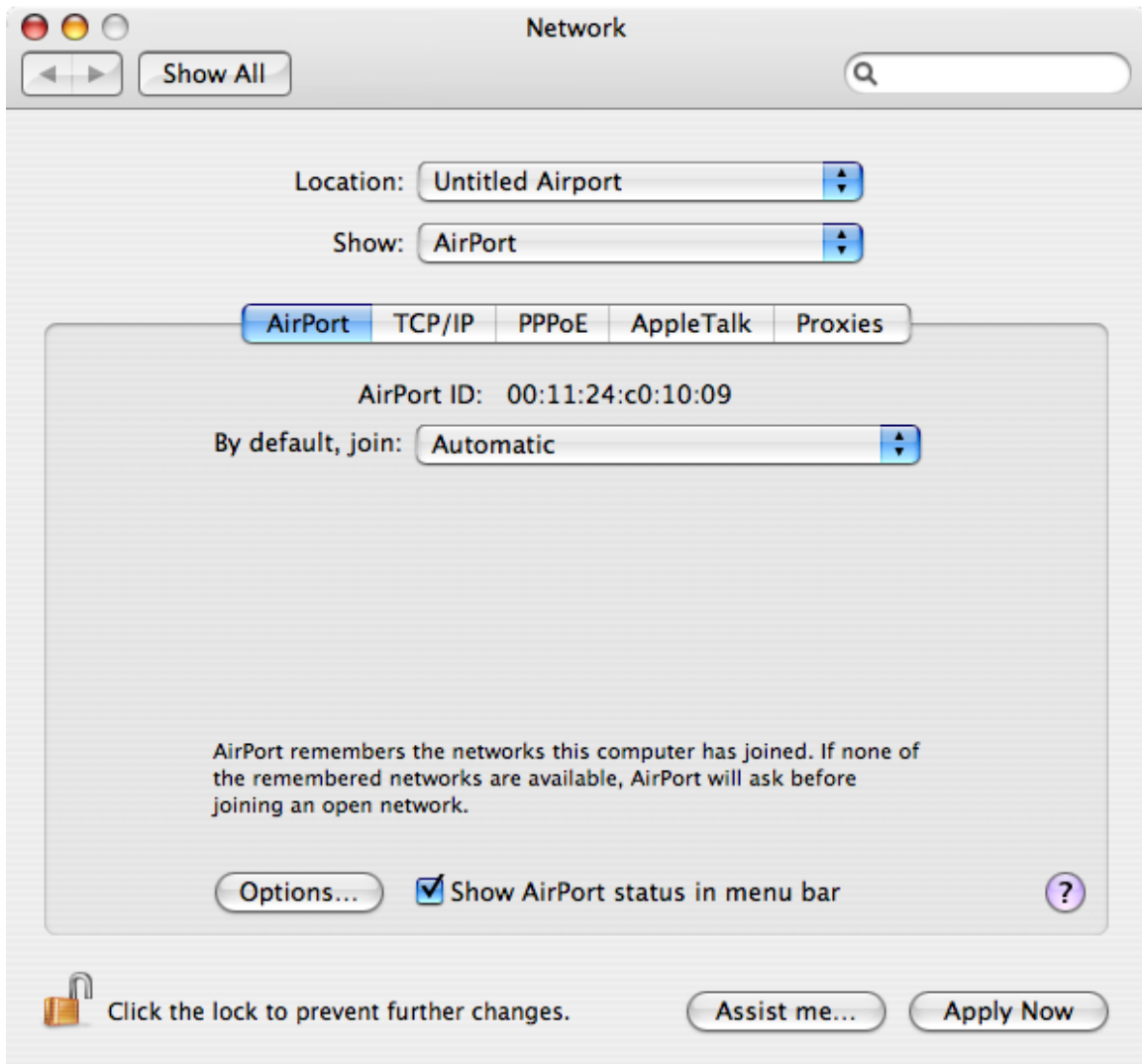


[Airport\_TCPIP\_new.png]

## Airport Wireless setup

Go Apple logo / System Preferences / Network.

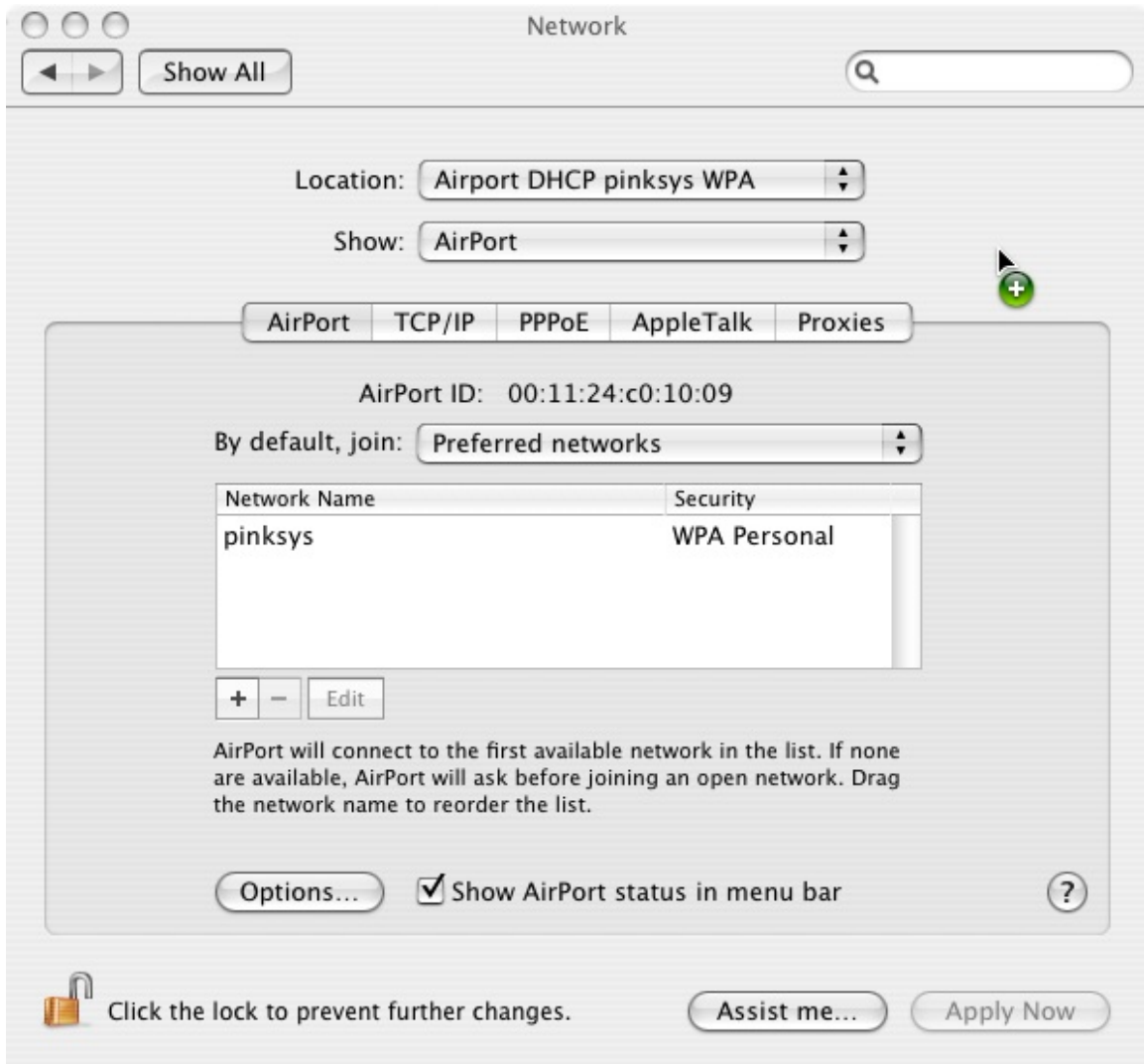
Then select Location, Show AirPort and the AirPort tab:



[Airport default tab.png]

You can click the Options button to check options for joining networks – see last section of this document.

Back on the AirPort tab, change “By default join” to “Preferred networks”:

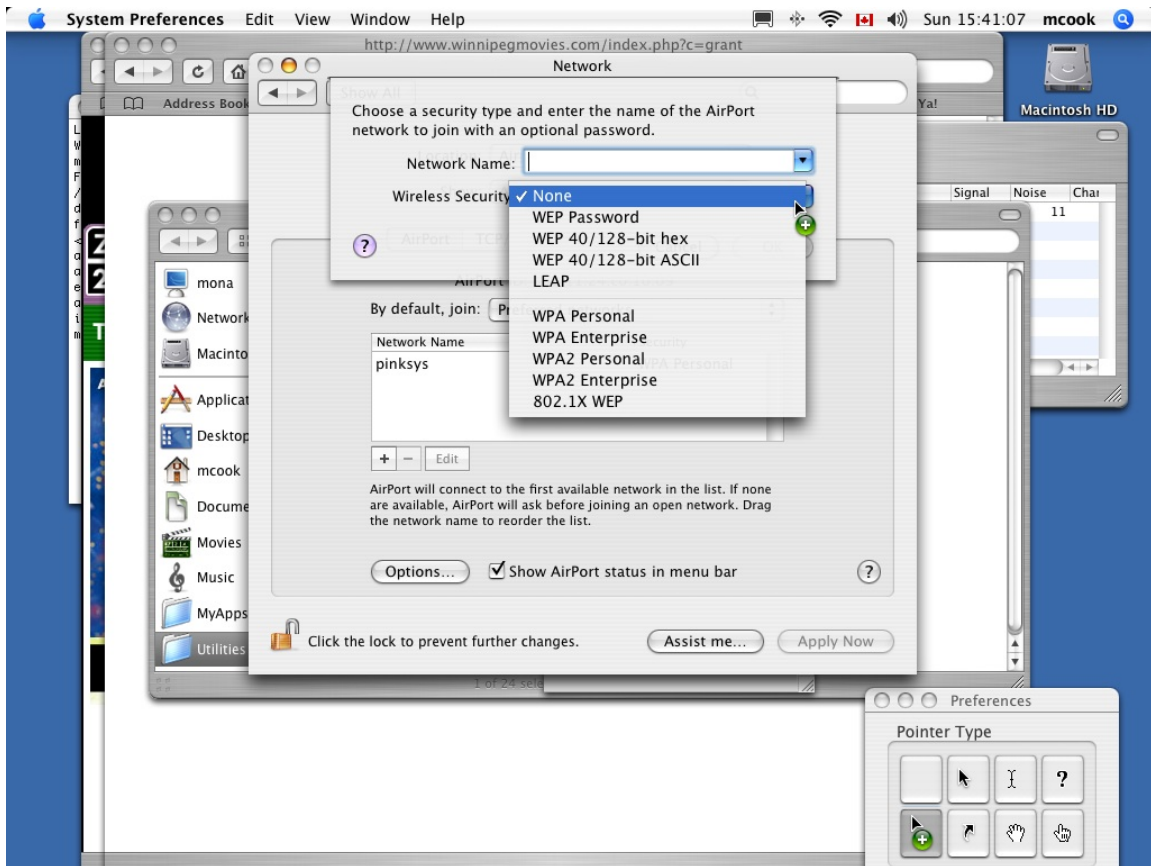


[Airport 1.jpg]

Then click on "+" to add a new entry, and then set the security info as follows.

## Preferred Airport network wireless security settings

Preferred Airport network wireless security:



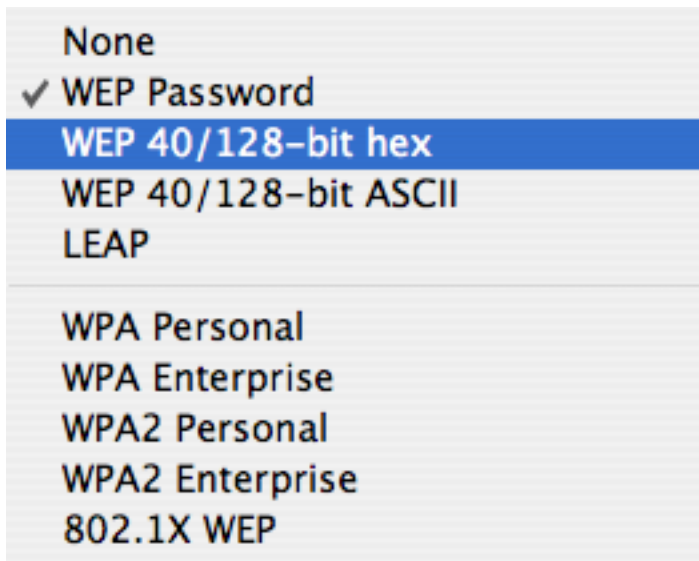
[Airport 2 Preferred]

Select "Network Name" to the ESSID of the network to join. You have to key it in if the network does not broadcast, otherwise you should be able to select it from the pull-down list.

Select a "Wireless Security" type other than "None" from the pull-down list and the "Password" field will appear:

- Choose use "WEP Password" to enter a 10-digit (64-bit) WEP key in the "Password" field.
- Choose, use "WEP 40/128-bit hex" to enter a 26-digit WEP key.
- Choose "WPA-Personal" to enter a WPA-Personal passphrase.

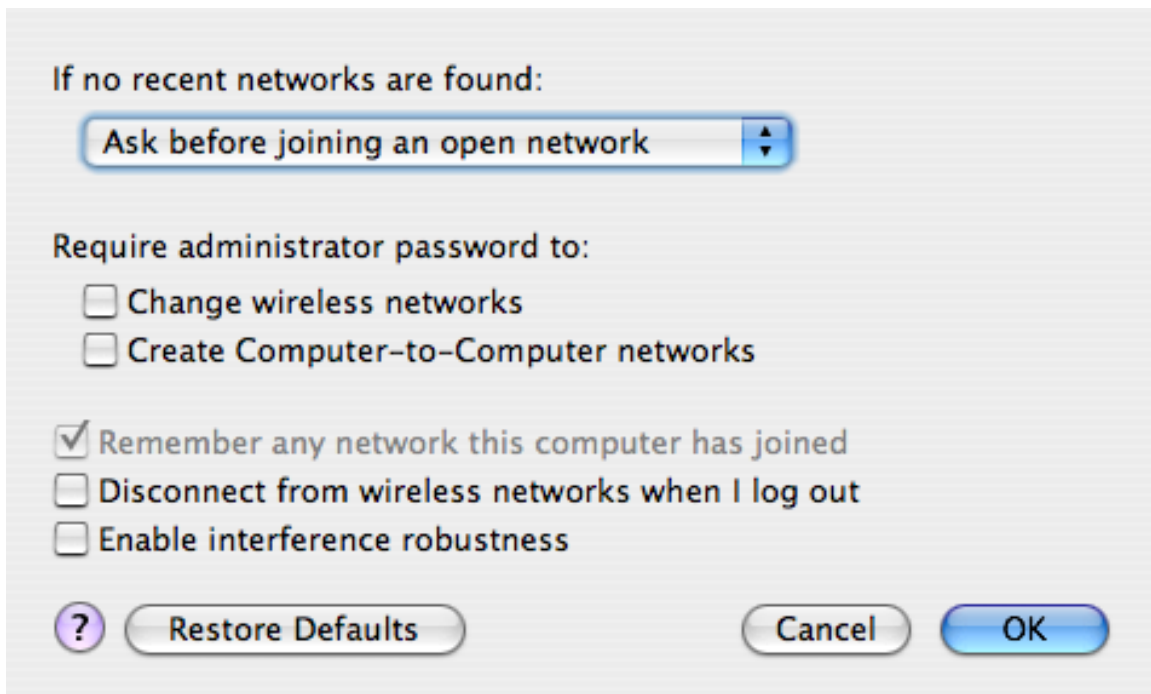
The other options are unusual in a residential setting.



[Airport\_WirelessSecurityOptions.png]

## Airport Options

These are the default Airport Options:



[Airport default options.png]

These are better settings for most users:



[Airport 3 Options.jpg]